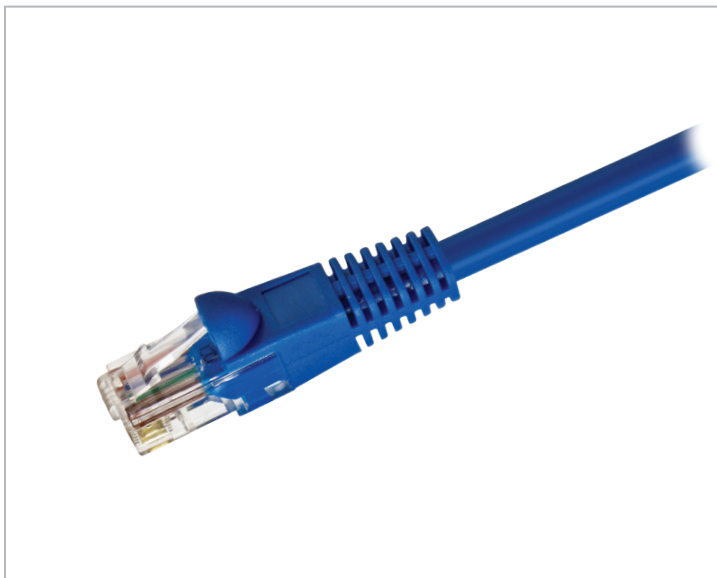




CAT6 Snagless UTP Patch Cable



Applications

The Vericom Category 6 Snagless Unshielded Patch Cables support and exceed 1000BASE-T (Gigabit Ethernet), 100BASE-T (Fast Ethernet), DSL, cable modem and telecommunications. These patch cables are backwards compatible with Category 5e systems.

Description / Specifications

Vericom Category 6 Snagless Unshielded Patch Cables are designed to meet and exceed ANSI/TIA-568-C.2 Category 6 and ISO 11801 Class E electrical performance requirements for frequencies up to 250 MHz and are tested up to 550 MHz. The patch cables utilize 23AWG stranded copper conductors in a four pair unshielded configuration with a cross filler for reduced EMI and maximum durability. These patch cables are rated CM and meet and exceed 1000BASE-T Ethernet applications with RJ-45 modular plugs.

Features & Benefits

- Snagless cable design with molded strain relief boots for ease of use
- Fully assembled CAT6 RJ-45 unshielded patch cord for maximum performance and reliability
- Stranded conductors with a 0.23" jacket diameter
- Cross filler and twisted pairs reduce crosstalk
- Available in Black, Blue, Gray, White or Yellow

Standards Compliance

- ISO/IEC 11801
- TIA/EIA-568-C.2
- RoHS Compliant

Construction

Assembly: 4 twisted pairs, stranded 23 AWG, UTP

Insulation: Polyethylene (PE)

Cross Filler: Yes

Jacket Dimensions: Nominal Diameter 0.23 in (5.8 mm)

Material: PVC

Connector Type: CAT6 Male RJ45

Plug Housing: UL94V-2 Clear Polyester

Boot: Snagless Molded PVC

Contacts: Brass, Gold Plated

Environmental Conditions

Operating Temperature: 14 °F to 167 °F (-10 °C to 75 °C)

Plug Insertion Lifespan: > 1000

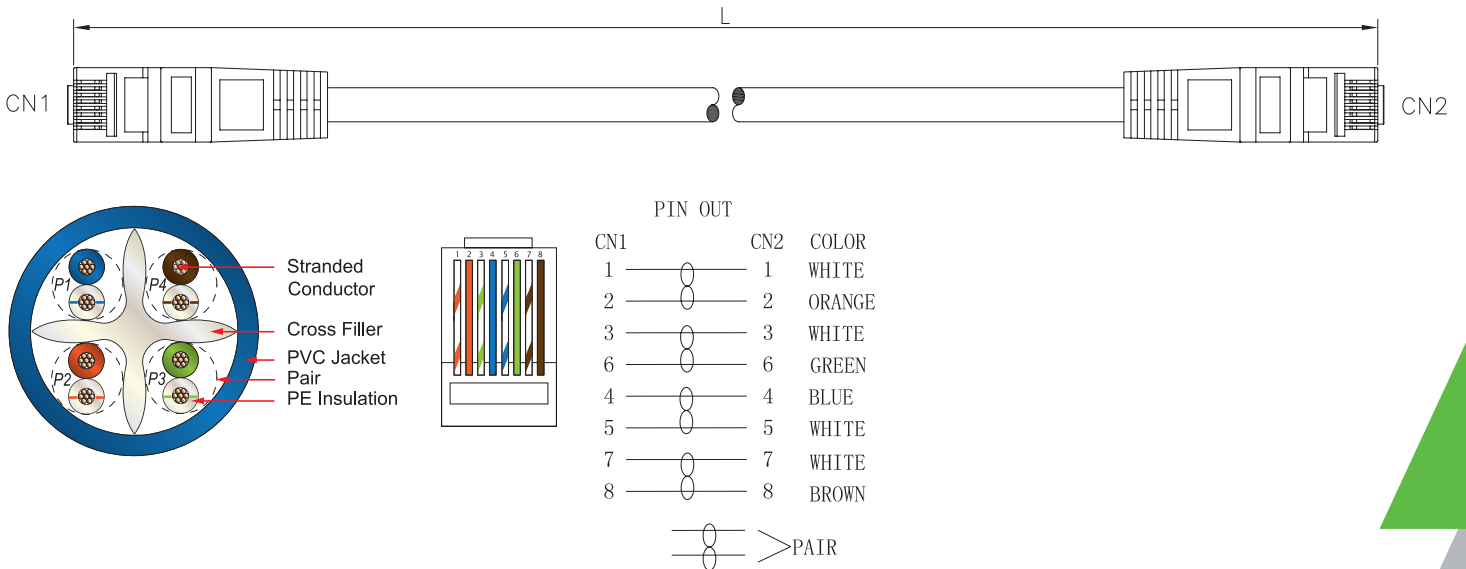


CAT6 Snagless UTP Patch Cable

Ordering Information

Description			Cable Marking		
CAT6 Patch Cable, U/UTP, 23 AWG, 4 Pair, Snagless			4P Patch Cable CAT6 UTP ISO/IEC 11801 & EN 50288 & TIA/EIA 568C.2		
Length	Black	Blue	Gray	White	Yellow
1 ft.	XPC6U-00234	XPC6U-00267	XPC6U-00245	XPC6U-00256	XPC6U-02901
2 ft.	XPC6U-00235	XPC6U-00268	XPC6U-00246	XPC6U-00257	XPC6U-02903
3 ft.	XPC6U-00236	XPC6U-00269	XPC6U-00247	XPC6U-00258	XPC6U-02904
4 ft.	XPC6U-02669	XPC6U-02679	XPC6U-02689	XPC6U-02699	XPC6U-02905
5 ft.	XPC6U-02670	XPC6U-02680	XPC6U-02690	XPC6U-02700	XPC6U-02906
6 ft.	XPC6U-00237	XPC6U-00270	XPC6U-00248	XPC6U-00259	XPC6U-02907
7 ft.	XPC6U-02671	XPC6U-02681	XPC6U-02691	XPC6U-02701	XPC6U-02908
10 ft.	XPC6U-02672	XPC6U-02682	XPC6U-02692	XPC6U-02702	XPC6U-02909
15 ft.	XPC6U-00240	XPC6U-00273	XPC6U-00251	XPC6U-00262	XPC6U-02910
25 ft.	XPC6U-00241	XPC6U-00274	XPC6U-00252	XPC6U-00263	XPC6U-02912
50 ft.	XPC6U-00243	XPC6U-00276	XPC6U-00254	XPC6U-00265	XPC6U-02913
75 ft.	XPC6U-02675	XPC6U-02685	XPC6U-02695	XPC6U-02705	XPC6U-02914
100 ft.	XPC6U-00244	XPC6U-00277	XPC6U-00255	XPC6U-00266	XPC6U-02915

Technical Illustration



TECHNICAL SHEETS ARE SUBJECT TO CHANGE WITHOUT NOTICE.

REV.20210412.2