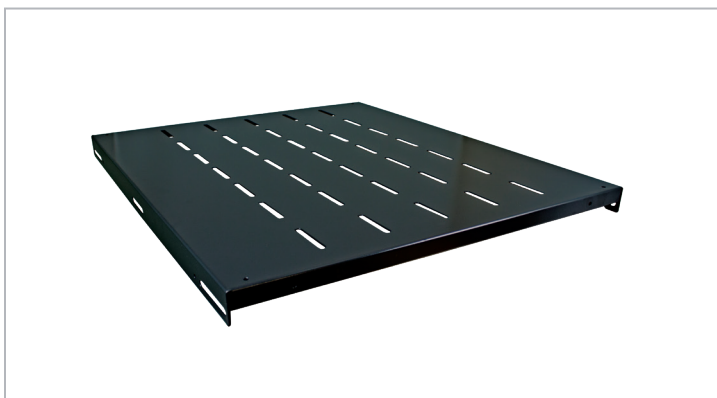




**Fixed Shelf**



**Description**

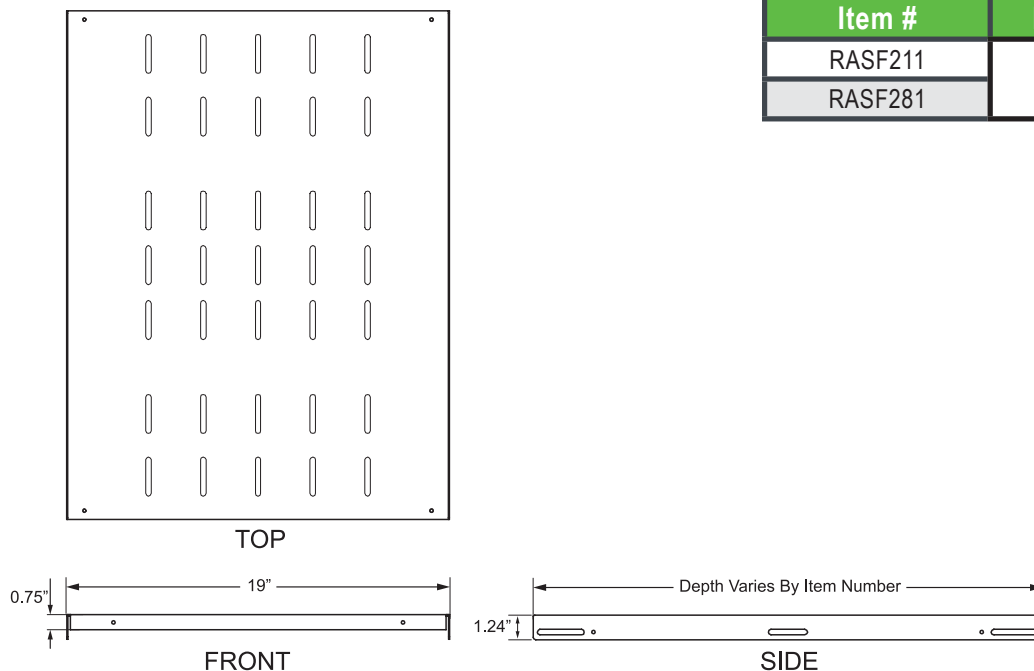
This 1U fixed shelf provides support for up to 200 lbs. of non-rackmountable equipment inside network and server cabinets.

**Product Specifications**

- Product Type:** Fixed Shelf
- Material:** 16 Gauge Cold Rolled Steel
- Finish:** Black Powder Coated
- Loading Capacity:** 200 lbs
- Dimensions (HxWxD):** Varies By Item #
- Rack Unit Quantity:** 1U
- Mounting Hardware:** Included
- Compliance & Standards:** RoHs Compliant
- Quantity Per Package:** Sold Individually

**Ordering Information**

**Technical Drawing**



Description		
1U Fixed Shelf		
Item #	Rack Units	Dims (H x W x D)
RASF211	1U	1.24" X 19" X 21.5"
RASF281		1.24" X 19" X 28.5"

TECHNICAL SHEETS ARE SUBJECT TO CHANGE WITHOUT NOTICE.

REV.20200601.4