



**Racks, Cabinets, & Infrastructure**



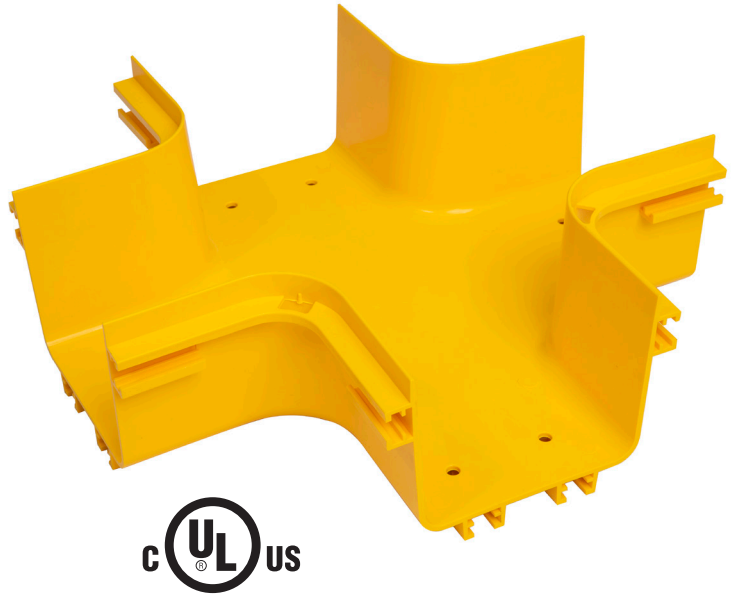
## **Fiber Cable Tray**

© 2020 Vericom Global Solutions

[info@vericomsolutions.com](mailto:info@vericomsolutions.com) • [vericomsolutions.com](http://vericomsolutions.com)

## Introduction

Vericom's Fiber Cable Tray System is a comprehensive raceway solution for data center, enterprise, central office, and mobile switching center applications. Designed to route and protect fiber optic and high-performance copper cabling to and from network cabinets, distribution frames, and other terminal devices, our system includes an extensive portfolio of channels, transitional fittings, drops, and support structures that provide the flexibility and configurability to fit any installation environment. And with tool-free assembly of all channel sections and transitional fittings, the Vericom Fiber Cable Tray System reduces installation and maintenance time, which in turn reduces the total cost of ownership.



## KEY FEATURES:

- Available in 5", 10", and 15" channel widths
- Minimum 2" bend radius maintained throughout the system to prevent excessive cable bends that result in signal loss
- All plastic components are made from lightweight UL 94 V-0 flame rated material
- Conforms to UL 2024 Cable Routing Assemblies and Communications Raceways (E515097)
- Tool-free design makes assembly and installation fast and easy



### Straight Channel



#### Description

Straight channel sections support and carry cables horizontally throughout a fiber cable routing system. Available in 6.5ft lengths, channels can be cut to size and connected to additional straight sections or transitional fittings such as elbows, tees, and crosses.

#### Features

- Tool-free installation
- Lightweight, flame-retardant PVC (V-0 rated)
- Requires couplers for connection (sold separately)

Item Number	Description	Dimensions (L x W x H)	Availability
<b>VCT-120SCP</b>	5"W x 4"D x 6.5'L Straight Channel	6.5' x 6.2" x 4.6"	Stocked
<b>VCT-240SCP</b>	10"W x 4"D x 6.5'L Straight Channel	6.5' x 10.9" x 4.6"	Special Order
<b>VCT-360SCP</b>	15"W x 4"D x 6.5'L Straight Channel	6.5' x 15.6" x 4.6"	Special Order
<b>VCT-120SCPC</b>	Cover for 5"W x 4"D x 6.5'L Straight Channel	6.5' x 6.1" x 0.5"	Stocked
<b>VCT-240SCPC</b>	Cover for 10"W x 4"D x 6.5'L Straight Channel	6.5' x 10.9" x 0.5"	Special Order
<b>VCT-360SCPC</b>	Cover for 15"W x 4"D x 6.5'L Straight Channel	6.5' x 15.6" x 0.5"	Special Order

### Horizontal 90° Elbow



#### Description

Connects to a straight channel section or other transitional fittings to provide a 90-degree horizontal bend in a fiber routing system.

#### Features

- Maintains minimum cable bend radius requirements
- Tool-free installation
- Lightweight, flame-retardant PVC (V-0 rated)
- Requires couplers for connection (sold separately)

Item Number	Description	Dimensions (L x W x H)	Availability
<b>VCT-120HE91</b>	5" Horizontal 90° Elbow	10.1" x 10.1" x 4.6"	Stocked
<b>VCT-240HE91</b>	10" Horizontal 90° Elbow	14.9" x 14.9" x 4.6"	Special Order
<b>VCT-360HE91</b>	15" Horizontal 90° Elbow	19.4" x 19.4" x 4.6"	Special Order
<b>VCT-120HE91C</b>	Cover for 5" Horizontal 90° Elbow	10.1" x 10.1" x 0.5"	Stocked
<b>VCT-240HE91C</b>	Cover for 10" Horizontal 90° Elbow	14.9" x 14.9" x 0.5"	Special Order
<b>VCT-360HE91C</b>	Cover for 15" Horizontal 90° Elbow	19.4" x 19.4" x 0.5"	Special Order

### Horizontal Tee



#### Description

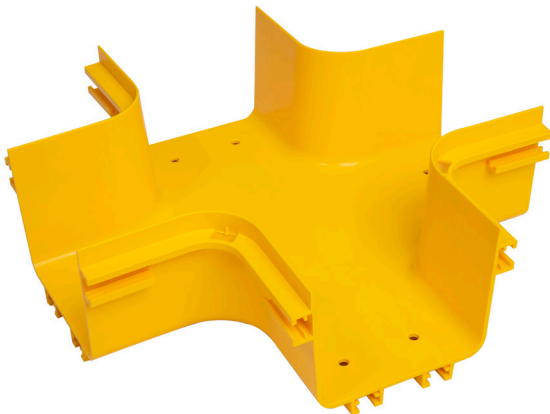
Horizontal tees connect to three straight channel sections or other transitional fittings to create a horizontal branch in a fiber routing system.

#### Features

- Maintains minimum cable bend radius requirements
- Tool-free installation
- Lightweight, flame-retardant PVC (V-0 rated)
- Requires couplers for connection (sold separately)

Item Number	Description	Dimensions (L x W x H)	Availability
<b>VCT-120HT1</b>	5" Horizontal Tee	13.9" x 10.1" x 4.6"	Stocked
<b>VCT-240HT1</b>	10" Horizontal Tee	18.7" x 14.8" x 4.6"	Special Order
<b>VCT-360HT1</b>	15" Horizontal Tee	23.2" x 19.4" x 4.6"	Special Order
<b>VCT-240AT</b>	10" x 5" Horizontal Tee	14.7" x 13.8" x 4.6"	Special Order
<b>VCT-120HT1C</b>	Cover for 5" Horizontal Tee	13.9" x 10.1" x 0.5"	Stocked
<b>VCT-240HT1C</b>	Cover for 10" Horizontal Tee	18.7" x 14.8" x 0.5"	Special Order
<b>VCT-360HT1C</b>	Cover for 15" Horizontal Tee	23.2" x 19.4" x 0.5"	Special Order
<b>VCT-240ATC</b>	Cover for 10" x 5" Horizontal Tee	14.7" x 13.8" x 0.5"	Special Order

### Horizontal Cross



#### Description

Horizontal crosses connect to four straight channel sections or other transitional fittings to create a four-way intersection with two exits in a fiber routing system.

#### Features

- Maintains minimum cable bend radius requirements
- Tool-free installation
- Lightweight, flame-retardant PVC (V-0 rated)
- Requires couplers for connection (sold separately)

Item Number	Description	Dimensions (L x W x H)	Availability
<b>VCT-120HC1</b>	5" Horizontal Cross	13.9" x 13.9" x 4.6"	Stocked
<b>VCT-240HC1</b>	10" Horizontal Cross	18.7" x 18.7" x 4.6"	Special Order
<b>VCT-360HC1</b>	15" Horizontal Cross	23.2" x 23.2" x 4.6"	Special Order
<b>VCT-240AC</b>	10" x 5" Horizontal Cross	18.7" x 14" x 4.6"	Special Order
<b>VCT-120HC1C</b>	Cover for 5" Horizontal Cross	13.9" x 13.9" x 0.5"	Stocked
<b>VCT-240HC1C</b>	Cover for 10" Horizontal Cross	18.7" x 18.7" x 0.5"	Special Order
<b>VCT-360HC1C</b>	Cover for 15" Horizontal Cross	23.2" x 23.2" x 0.5"	Special Order
<b>VCT-240ACC</b>	Cover for 10" x 5" Horizontal Cross	18.7" x 14" x 0.5"	Special Order

### 45° Up Elbow



#### Description

Connects to a straight channel section to create a 45-degree upward angle from a horizontal run. Use with a 45-degree down elbow to change the elevation of a fiber routing system.

#### Features

- Maintains minimum cable bend radius requirements
- Tool-free installation
- Lightweight, flame-retardant PVC (V-0 rated)
- Requires couplers for connection (sold separately)

Item Number	Description	Dimensions (L x W x H)	Availability
<b>VCT-120UE41</b>	5" 45° Up Elbow	8.2" x 6.1" x 6.6"	Stocked
<b>VCT-240UE41</b>	10" 45° Up Elbow	8.2" x 10.9" x 6.6"	Special Order
<b>VCT-360UE41</b>	15" 45° Up Elbow	8.1" x 15.6" x 6.6"	Special Order
<b>VCT-120UE41C</b>	Cover for 5" 45° Up Elbow	TBD	Stocked
<b>VCT-240UE41C</b>	Cover for 10" 45° Up Elbow	TBD	Special Order
<b>VCT-360UE41C</b>	Cover for 15" 45° Up Elbow	TBD	Special Order

### 45° Down Elbow



#### Description

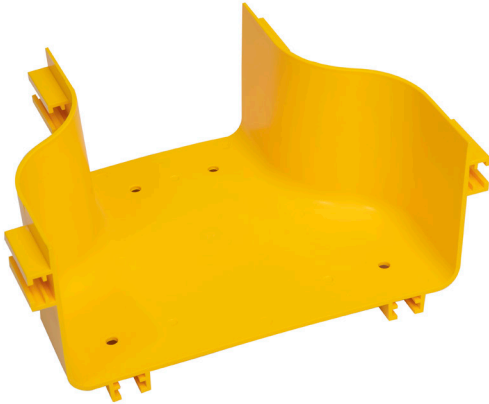
Connects to a straight channel section to create a 45-degree downward angle from a horizontal run. Use with a 45-degree up elbow to change the elevation of a fiber routing system.

#### Features

- Maintains minimum cable bend radius requirements
- Tool-free installation
- Lightweight, flame-retardant PVC (V-0 rated)
- Requires couplers for connection (sold separately)

Item Number	Description	Dimensions (L x W x H)	Availability
<b>VCT-120DE41</b>	5" 45° Down Elbow	7.6" x 6.4" x 6.4"	Stocked
<b>VCT-240DE41</b>	10" 45° Down Elbow	7.4" x 10.9" x 6.3"	Special Order
<b>VCT-360DE41</b>	15" 45° Down Elbow	7.3" x 15.6" x 6.3"	Special Order
<b>VCT-120DE41C</b>	Cover for 5" 45° Down Elbow	TBD	Stocked
<b>VCT-240DE41C</b>	Cover for 10" 45° Down Elbow	TBD	Special Order
<b>VCT-360DE41C</b>	Cover for 15" 45° Down Elbow	TBD	Special Order

## Reducer



### Description

Reducers provide a transition from one tray width to another and can connect to straight channel sections or other transitional fittings.

### Features

- Tool-free installation
- Lightweight, flame-retardant PVC (V-0 rated)
- Requires couplers for connection (sold separately)

Item Number	Description	Dimensions (L x W x H)	Availability
<b>VCT-240AS</b>	10" to 5" Reducer	10.6" x 8.1" x 4.6"	Special Order
<b>VCT-360AS</b>	15" to 10" Reducer	15.6" x 8.1" x 4.6"	Special Order

## Coupler



### Description

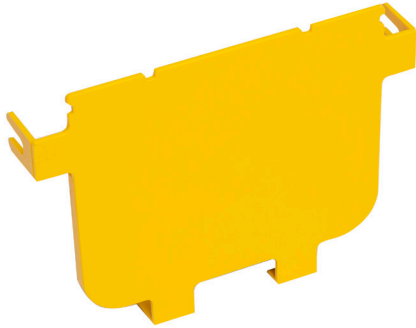
Couplers are used to quickly and easily connect straight channel sections and/or transitional fittings. Completely tool-free installation - simply hand-tighten the thumb screws to secure.

### Features

- Tool-free installation
- Plastic thumb screws included (quantity varies by coupler size)
- Lightweight, flame-retardant PVC (V-0 rated)

Item Number	Description	Dimensions (L x W x H)	Availability
<b>VCT-120CNC</b>	5" Coupler	6.7" x 3.3" x 4.8"	Stocked
<b>VCT-240CNC</b>	10" Coupler	11.4" x 3.3" x 4.8"	Special Order
<b>VCT-360CNA</b>	15" Coupler (10 pcs of plastic thumb screws and square nuts included)	16.5" x 3.9" x 5.4"	Special Order

## End Cap



### Description

End caps close off terminal ends of a straight channel or transitional fitting to protect cables and provide a finished look.

### Features

- Tool-free installation
- 4 sets of plastic t-bolts and hex nuts included
- Lightweight, flame-retardant PVC (V-0 rated)

Item Number	Description	Dimensions (L x W x H)	Availability
<b>VCT-120EC</b>	5" End Cap	5.9" x 4.5" x 1.0"	Stocked
<b>VCT-240EC</b>	10" End Cap	10.6" x 4.5" x 1.0"	Special Order
<b>VCT-360EC</b>	15" End Cap	15.3" x 4.5" x 1.0"	Special Order

### Spill Over



#### Description

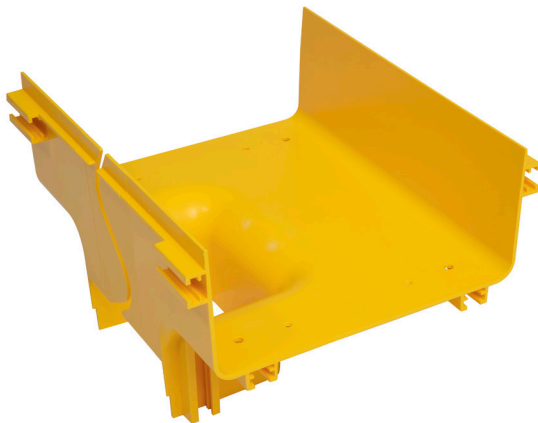
Side mounted spill overs provide a vertical exit from a horizontal fiber tray run, allowing cables to route into cabinets and racks below. Tool-free installation allows this spill over to be located and/or repositioned anywhere along a straight channel section.

#### Features

- Maintains minimum cable bend radius requirements
- Tool-free installation
- Lightweight, flame-retardant PVC (V-0 rated)
- Includes 1 set of plastic T-bolts and hex nuts
- Snap-on cover included

Item Number	Description	Dimensions (L x W x H)	Availability
<b>VCT-090SD</b>	3.5"W Spill Over	7.7" x 7.3" x 5.6"	Stocked
<b>VCT-130SD</b>	5"W Spill Over	8.8" x 7.5" x 5.5"	Stocked

### Vertical Tee



#### Description

Vertical tees connect to straight channel sections or other transitional fittings to provide a 90-degree vertical drop in a fiber routing system.

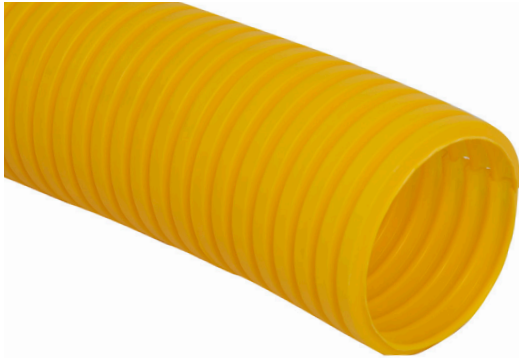
#### Features

- Maintains minimum cable bend radius requirements
- Tool-free installation
- Lightweight, flame-retardant PVC (V-0 rated)
- Requires couplers for connection (sold separately)

Item Number	Description	Dimensions (L x W x H)	Availability
<b>VCT-120VT1</b>	5" Vertical Tee	11.8" x 7.8" x 7.1"	Special Order
<b>VCT-240AV</b>	10" to 5" Vertical Tee	11.8" x 10.9" x 7.5"	Special Order



### Flexible Hose



#### Description

Use this Flexible Hose to protect cables throughout a vertical drop from an overhead fiber routing system into a cabinet or rack. The hose is corrugated to provide maximum flexibility and is split lengthwise for easy cable insertion or removal.

#### Features

- 10ft length can be cut to size
- Requires VCT-050U4 Hose Bracket and VCT-090SD or VCT-120SD Spill Over for installation (each sold separately)
- Tool-free installation
- Lightweight, flame-retardant PVC (V-0 rated)

Item Number	Description	Dimensions (L x W x H)	Availability
<b>VCT-050H3</b>	Flexible Hose 10ft	10' x 2.0" x 2.0"	Stocked

### Hose Bracket



#### Description

Hose Brackets secure the Flexible Hose to the Spill Over in a vertical drop from an overhead fiber tray run to a cabinet or rack below.

#### Features

- Includes 4 brackets
- Requires VCT-050U4 Hose Bracket and VCT-090SD or VCT-120SD Spill Over for installation (each sold separately)
- Tool-free installation
- Lightweight, flame-retardant PVD (V-0 rated)

Item Number	Description	Dimensions (L x W x H)	Availability
<b>VCT-050U4</b>	Hose Bracket (4 pcs)	2.3" x 2.4" x 0.8"	Stocked

### Trumpet



#### Description

Trumpet spillouts are used to limit the bend radius of cables to 2" when exiting from a straight channel or other transitional fitting.

#### Features

- Tool-free installation
- 4 sets of plastic t-bolts and hex nuts included
- Lightweight, flame-retardant PVC (V-0 rated)

Item Number	Description	Dimensions (L x W x H)	Availability
<b>VCT-120TS</b>	5" Trumpet	7.0" x 4.9" x 2.8"	Stocked
<b>VCT-240TS</b>	10" Trumpet	12.7" x 5.4" x 2.2"	Special Order

### Adapters



#### Description

These adapters allow Vericom's 5" wide Fiber Cable Tray system to quickly and easily connect to an existing Commscope® Fiberguide® or Panduit® FiberRunner® raceway.

#### Features

- Built-in couplers on each end
- Includes all required installation hardware
- Tool-free installation
- Lightweight, flame-retardant PVC (V-0 rated)

Item Number	Description	Dimensions (L x W x H)	Availability
<b>VCT-120AD100</b>	Adapter to Commscope 4x4 Tray	6.6" x 4.0" x 4.8"	Stocked
<b>VCT-120PD100</b>	Adapter to Panduit 4x4 Tray	6.6" x 3.9" x 4.8"	Stocked
<b>VCT-120PD150</b>	Adapter to Panduit 4x6 Tray	7.9" x 3.9" x 4.8"	Stocked

### Cable Tray to Ladder Support Bracket



#### Description

Suspend a fiber tray run from a ladder rack with this support kit. Position the bracket anywhere along a ladder stringer and secure with the included hardware.

NOTE: fiber cable tray should be supported at least every 6.5 ft and at every coupler location.

#### Features

- All required installation hardware included
- 8" threaded rod included (can be cut to size in the field)
- No drilling required

Item Number	Description	Dimensions (L x W x H)	Availability
<b>VCT-120SSS</b>	5" Cable Tray to Ladder Support Bracket	N/A	Special Order
<b>VCT-240SSS</b>	10" Cable Tray to Ladder Support Bracket	N/A	Special Order
<b>VCT-360SSS</b>	15" Cable Tray to Ladder Support Bracket	N/A	Special Order

### Cabinet Standoff Kit



#### Description

Support a fiber tray run above a row of cabinets using this standoff kit. Support brackets can be positioned anywhere along a straight channel or transitional fitting.

NOTE: fiber cable tray should be supported at least every 6.5 ft and at every coupler location.

#### Features

- Assembly hardware included
- Drilling into cable tray not required
- Hardware for securing to cabinet not included

Item Number	Description	Dimensions (L x W x H)	Availability
<b>VCT-120SO</b>	Cabinet Standoff Kit for 5" Cable Tray	N/A	Stocked
<b>VCT-240SO</b>	Cabinet Standoff Kit for 10" Cable Tray	N/A	Special Order
<b>VCT-360SO</b>	Cabinet Standoff Kit for 15" Cable Tray	N/A	Special Order

### Dual Level Cabinet Standoff



#### Description

Support both a 5" fiber cable tray and a wire basket tray with this single standoff support kit. Easily mounts to the floor or to the top of a cabinet.

#### Features

- Tool-free connection to fiber tray
- Fiber cable tray mounting height is adjustable

Item Number	Description	Dimensions (L x W x H)	Availability
<b>VCT-350DSL</b>	Dual Level Cabinet Standoff - 15"W x 20"H	N/A	Stocked
<b>VCT-500DSL</b>	Dual Level Cabinet Standoff - 20"W x 20"H	N/A	Stocked
<b>VCT-750DSL</b>	Dual Level Cabinet Standoff - 20"W x 30"H	N/A	Stocked

### Trapeze



#### Description

Suspend a fiber tray run from the ceiling with this trapeze support kit. Includes 2 pcs of threaded rod and all hardware required for installation.

NOTE: fiber cable tray should be supported at least every 6.5 ft and at every coupler location.

#### Features

- Install at any location along a straight channel or transitional fitting
- Drilling into cable tray not required
- 2 pcs of M20 threaded rod included
- Includes all required hardware for installation

Item Number	Description	Dimensions (L x W x H)	Availability
<b>VCT-120CS10</b>	3' Trapeze for 5" Cable Tray	N/A	Stocked
<b>VCT-120CS15</b>	5' Trapeze for 5" Cable Tray	N/A	Stocked
<b>VCT-120CS20</b>	6.5' Trapeze for 5" Cable Tray	N/A	Stocked
<b>VCT-120CS30</b>	10' Trapeze for 5" Cable Tray	N/A	Stocked
<b>VCT-240CS10</b>	3' Trapeze for 10" Cable Tray	N/A	Special Order
<b>VCT-240CS15</b>	5' Trapeze for 10" Cable Tray	N/A	Special Order
<b>VCT-240CS20</b>	6.5' Trapeze for 10" Cable Tray	N/A	Special Order
<b>VCT-240CS30</b>	10' Trapeze for 10" Cable Tray	N/A	Special Order
<b>VCT-360CS10</b>	3' Trapeze for 15" Cable Tray	N/A	Special Order
<b>VCT-360CS15</b>	5' Trapeze for 15" Cable Tray	N/A	Special Order
<b>VCT-360CS20</b>	6.5' Trapeze for 15" Cable Tray	N/A	Special Order
<b>VCT-360CS30</b>	10' Trapeze for 15" Cable Tray	N/A	Special Order



## Plastic Thumb Screw



### Description

Bag of 50 thumb screws for fiber cable tray assembly

Item Number	Description	Dimensions (L x W x H)	Availability
<b>VCT-HF01-B50</b>	Plastic Thumb Screw	1.0" x 1.0" x 1.2"	Stocked

## Plastic square nut



### Description

Bag of 50 square nuts for fiber cable tray assembly

Item Number	Description	Dimensions (L x W x H)	Availability
<b>VCT-HF02-B50</b>	Plastic square nut	0.7" x 0.7" x 0.3"	Stocked

## Plastic T-bolt



### Description

Bag of 50 T-bolts for fiber cable tray assembly

Item Number	Description	Dimensions (L x W x H)	Availability
<b>VCT-HF03-B50</b>	Plastic T-bolt	0.8" x 0.4" x 1.0"	Stocked

## Plastic Hex Nut



### Description

Bag of 50 hex nuts for fiber cable tray assembly

Item Number	Description	Dimensions (L x W x H)	Availability
<b>VCT-HF04-B50</b>	Plastic Hex Nut	1.0" x 1.0" x 0.5"	Stocked



**Vericom Global Solutions**

10025 Investment Drive, Suite 120

Knoxville, TN 37932

[www.vericomsolutions.com](http://www.vericomsolutions.com)

[sales@vericomsolutions.com](mailto:sales@vericomsolutions.com)

Phone: (865) 671-4455

Fax: (865) 671-4497